

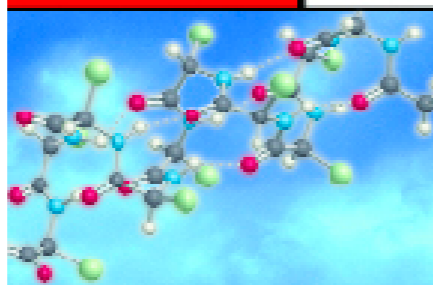
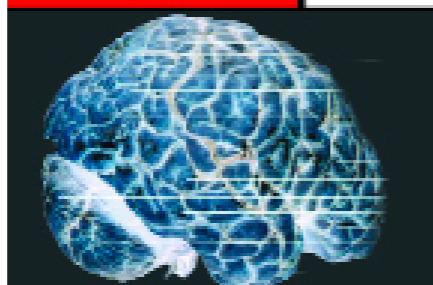
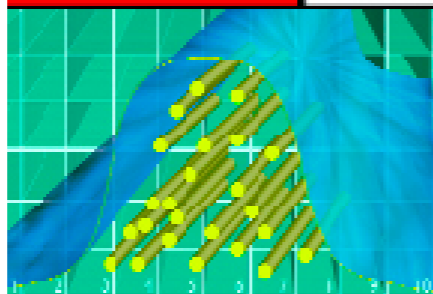
Lag-Kwik is a woven fabric impregnated with an inorganic adhesive, designed to repair and/or cover existing asbestos insulation on pipes, boilers and breeching. **Lag-Kwik** is the second component of the **Lag-Kit**® System for thermal insulation repair. Areas that are repaired or re-covered with **Lag-Kwik** can be successfully topcoated with **Lag-Kote**® or **Lag-Kote II** for complete encapsulation. The self-contained adhesive contained in **Lag-Kwik** is water-activated and nonflammable. **Lag-Kwik** comes in rolls 4 inches wide and is heat resistant up to 1000°F.

SURFACE PREPARATION: Warning! If you scrape, sand, or remove old paint from any surface, you may release lead dust. LEAD IS TOXIC. EXPOSURE TO LEAD DUST CAN CAUSE SERIOUS ILLNESS, SUCH AS BRAIN DAMAGE, ESPECIALLY IN CHILDREN. PREGNANT WOMEN SHOULD ALSO AVOID EXPOSURE. Wear a NIOSH approved respirator to control lead exposure. Carefully clean up with a wet mop or HEPA vacuum. Before you start, find out how to protect yourself and you family by contacting the U.S. EPA/Lead Information Hotline at 1-800-424-LEAD(5323) or log on to www.epa.gov/lead.

Locate damaged asbestos containing thermal insulation. Thoroughly remove all dust and dirt that has accumulated on lagging or covering, using a vacuum with a HEPA filter specifically designed to capture hazardous dust and waste or wipe surfaces with a damp cloth. Do not air clean surfaces; this could increase asbestos exposure. Heavy rust should be scraped or wire-brushed from all ferrous metal surfaces or hangers before vacuuming surrounding surfaces. Wetting exposed insulation with **Penewet**® (surfactant) will help suppress the release of asbestos fibers.

APPLICATION: Cut Lag-Kwik to appropriate size. Dip **Lag-Kwik** in water and smooth out excess water (DO NOT WRING OUT). Shape **Lag-Kwik** to specific area by hand and apply to surface. Overlap loose ends of **Lag-Kwik** to ensure complete coverage. Allow **Lag-Kwik** to dry before applying **Lag-Kote** or **Lag-Kote II**.

PRECAUTIONS: Close container after each use. Store in a dry place at temperatures between 40°F and 100°F. Approved respirators must be used to prevent inhalation of asbestos fibers that may be present in the air. Protective clothing should be worn. Refer to the Material Safety Data Sheet (MSDS) available from your distributor or at www.fiberlock.com for further safety and handling instructions. Careful consideration should be given to all EPA, OSHA, and State regulations in effect at the time of application of A-B-C. The EPA, through the Office of Pesticides and Toxic Substances, has issued a report headed "Guidance for Controlling Friable Asbestos Containing Materials in Buildings", EPA 560/5 85-024 June 1985, containing the proper data, cautions, and procedures for asbestos control. Copies are available from: TSCA Industry Asst. Office, EPA TS-799, 401 M Street SW, Washington, DC 20460, (202) 554-1404.



QUALITY

KNOWLEDGE

SCIENCE

FIBERLOCK
TECHNOLOGIES

LAG
KWIK®

Insulation Repair Products

**WATER-
ACTIVATED
REPAIR CLOTH**

DRYING TIME @ 70°F 50% R.H:
Hot insulation: 2-4 hours
Cold insulation: 8-12 hours

CLEANUP: Tools and drippings should be cleaned with warm soapy water before coating dries. Follow equipment manufacturer's directions to clean spray equipment. Dispose of all waste according to current Local, State and Federal regulations

PHYSICAL PROPERTIES:

Count (per sq. in.) ± 10%:	18 x 14		
Weight (oz./sq. yd.) ± 10%:	14.8		
Thickness (in.) ± 10%:	0.024		
Breaking Strength (lb./in.)	Warp: 100	Fill: 45	
Service Temperature:	1000°F		

CAUTION!
KEEP OUT OF REACH OF CHILDREN.

24 hour Emergency "CHEM-TEL" Phone: 1-800-255-3924

DISCLAIMER: These suggestions and data are based on information we believe to be reliable. They are offered in good faith, but without guarantee, as conditions and methods of use of this product are beyond our control. Neither Fiberlock Technologies, Inc., nor its agents shall be responsible for the use of this product or any procedures or apparatus mentioned. We recommend that the prospective user determine the suitability of **Lag-Kwik** for each specific project and for the health and safety of personnel working in the area.

For additional information and/or precautions check Material Safety Data Sheet (MSDS) or Product Data Sheet (PDS) available online at www.fiberlock.com

FOR PROFESSIONAL USE ONLY
Net Weight: 20 lbs
3 Rolls of 4" X 150' (50 Sq. Ft. Total)

6427

www.fiberlock.com

Fiberlock Technologies, Inc.
Andover, MA 01810
(800) 342-3755
www.fiberlock.com